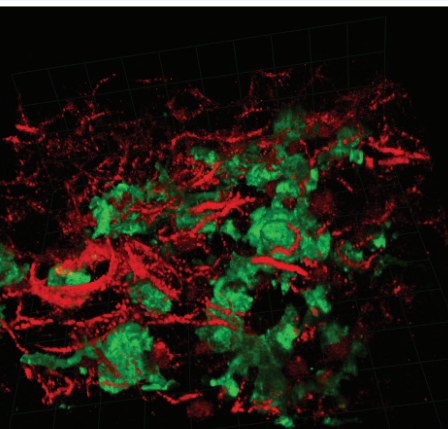




# Debates and Didactics in Hematology and Oncology

Sea Island, Georgia  
July 27 - 31, 2016

Register by May 22 to take  
advantage of the early  
registration discount.  
[www.winshipcancerDDHO.com](http://www.winshipcancerDDHO.com)



Collagen (red) and lung cancer cells (green) imaged in a resected mouse lung using multi-photon imaging at Winship Cancer Institute of Emory University Integrated Cellular Imaging (ICI) core.

## MEETING OVERVIEW

The 2016 *Debates and Didactics in Hematology and Oncology* conference features a comprehensive review into mechanisms of disease and treatments for patients with cancer or blood disorders. Interactive debates and didactic lectures on controversial topics and standards of care offer attendees the opportunity to hear how science supports each point of view. Presentations and discussions will focus on current basic and clinical research, including the use of molecular targeted therapy, immunotherapies, and other novel therapeutic approaches.

## TARGET AUDIENCE

This educational activity is intended for hematologists, oncologists, and other allied healthcare professionals interested in the management of hematology and oncology.

## CREDIT

This activity has been planned and implemented in accordance with the accreditation requirements and policies of the Accreditation Council for Continuing Medical Education (ACCME®) through the joint providership of prIME Oncology and Winship Cancer Institute of Emory University. prIME Oncology is accredited by the ACCME to provide continuing medical education for physicians.

This activity has been approved for *AMA PRA Category 1 Credits™*.

Winship Cancer Institute  
Emory University  
1365 Clifton Road, C-4014N  
Atlanta, Georgia 30322



EMORY

WINSHIP  
CANCER  
INSTITUTE

A Cancer Center Designated by  
the National Cancer Institute

## Debates and Didactics in Hematology and Oncology July 27 - 31, 2016

### CONFERENCE LOCATION AND LODGING

The 2016 *Debates and Didactics in Hematology and Oncology* conference will be held in Sea Island, Georgia. Rooms are available at The Cloister, The Beach Club, The Lodge, and the Inn at Sea Island. You will receive a reservation request form with your registration confirmation. All hotel rooms must be reserved using this form.

### REGISTRATION

Attendee and Exhibitor Registration is now available at:

**[www.winshipcancerDDHO.com](http://www.winshipcancerDDHO.com)**

For additional information contact Jaye Harden,  
[jaye.harden@prlMEoncology.org](mailto:jaye.harden@prlMEoncology.org) or 678.892.1353

### SUPPORT

Several options are available to organizations interested in supporting this conference. For more information, please contact Anne Rojas at [Anne.Rojas@prlMEoncology.org](mailto:Anne.Rojas@prlMEoncology.org).

**EARLY REGISTRATION DISCOUNTS – REGISTER NOW!**