

REGISTRATION

FROM NEUROPATHY TO CARDIOMYOPATHY: HOW TO NEVER MISS AMYLOIDOSIS

MAY 11, 2019

Atlanta, Georgia

REGISTER ONLINE RECOMMENDED
www.emory.edu/CME

Name: _____

Specialty/Title: _____

Address: _____

City/State/Zip: _____

Phone: _____ Fax: _____

Email: _____
(REQUIRED)

Special Accommodations: _____

PLEASE CIRCLE ONE: **YES** – I will attend **NO** – I will not attend

FEES:

Physicians **\$75**

Other Healthcare Professionals **\$50**

TOTAL ENCLOSED: \$ _____

Make check payable to: **EMORY UNIVERSITY SCHOOL OF MEDICINE**

Detach and mail or fax to:

CONTINUING MEDICAL EDUCATION

Emory University School of Medicine
100 Woodruff Circle, NE, Suite 331
Atlanta, GA 30322

PHONE: 404-727-3612 TOLL FREE: 888-727-5695 (outside Atlanta)

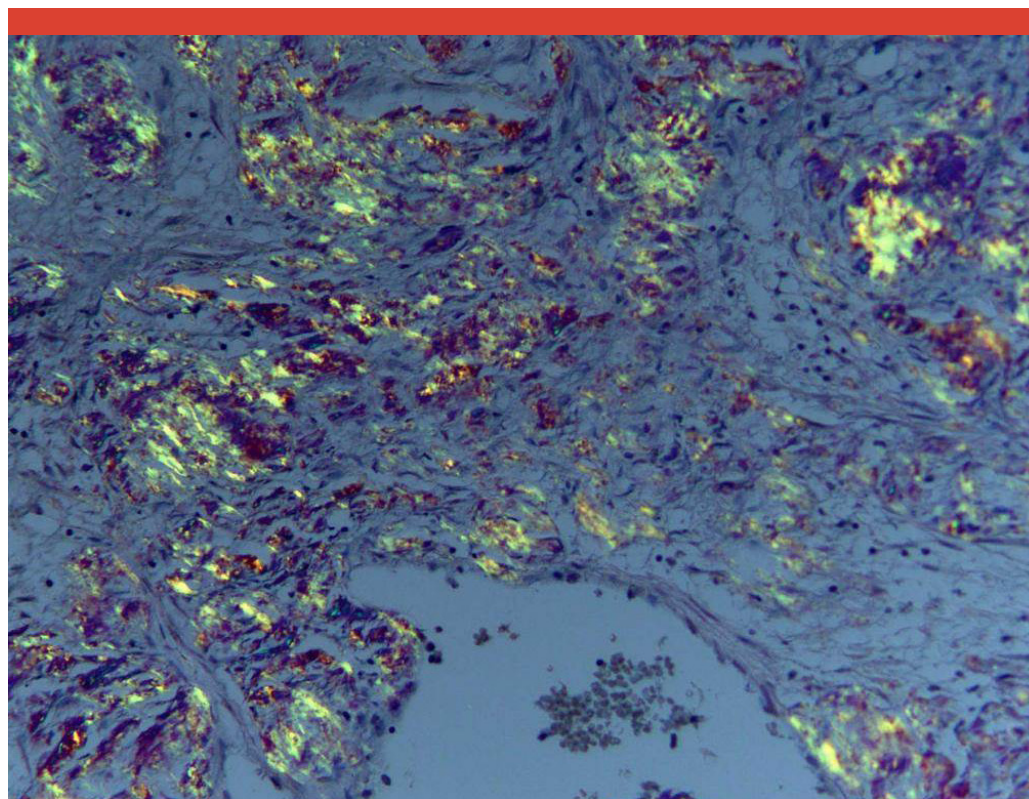
EMAIL: milini.mingo@emory.edu FAX: 404-727-5667

NONPROFIT ORG
U.S. POSTAGE
PAID
EMORY
UNIVERSITY

EMORY UNIVERSITY CONTINUING MEDICAL EDUCATION

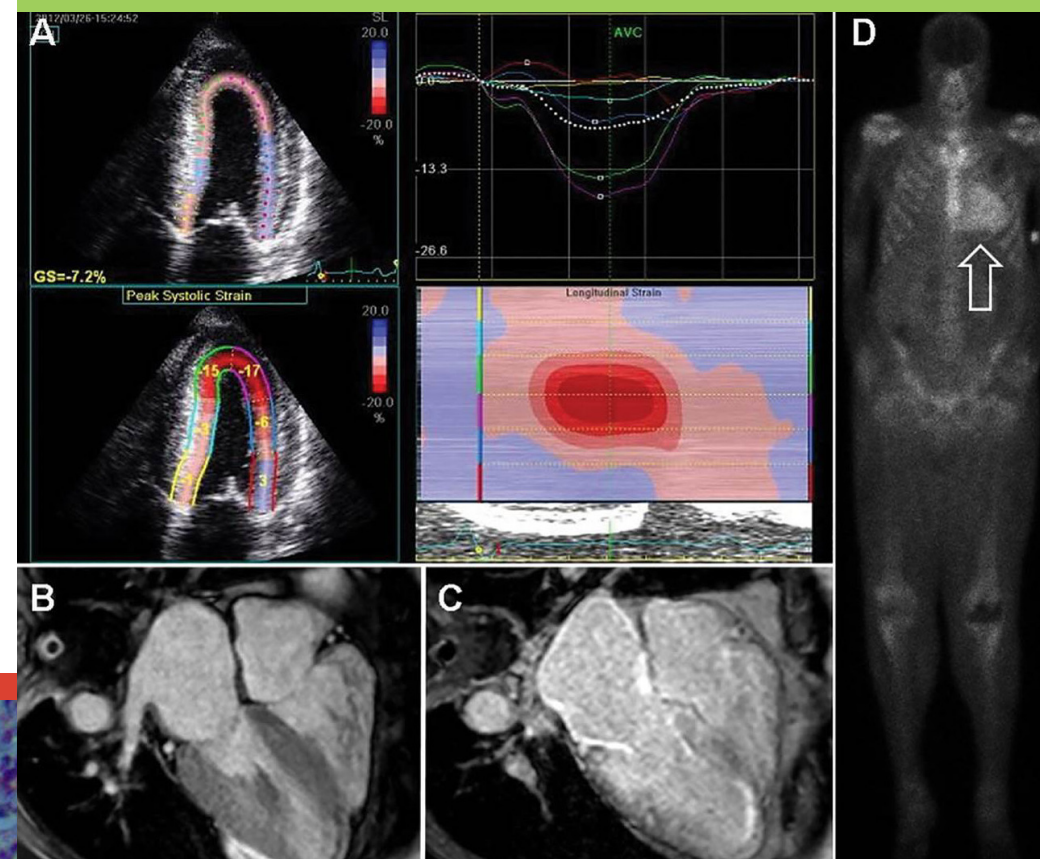
Emory University School of Medicine
100 Woodruff Circle, Suite 331
Atlanta, GA 30322

www.emory.edu/CME



Amyloid Clinic at Emory
presents

FROM NEUROPATHY TO CARDIOMYOPATHY: HOW TO NEVER MISS AMYLOIDOSIS



MAY 11, 2019

Emory Conference Center Hotel
1615 Clifton Road | Atlanta, GA 30329



EMORY
UNIVERSITY
SCHOOL OF
MEDICINE

AGENDA

MAY 11, 2019

8:15 - 8:45 AM	REGISTRATION & BREAKFAST
8:45 – 9:00	WHY AN AMYLOID SYMPOSIUM NOW? Craig Hofmeister, MD, MPH
9:00 – 9:20	WHEN TO THINK ABOUT AMYLOIDOSIS? Mark Sloan, MD
9:20 – 9:40	CONGO RED IS JUST THE BEGINNING David Jaye, MD & Alton Brad Farris, MD
9:40 – 10:00	PERIPHERAL NEUROPATHY WORK-UP Elizabeth Mauricio, MD
10:00 – 10:20	BREAK
10:20 – 10:40	DIAGNOSIS OF INFILTRATIVE CARDIOMYOPATHY Kunal Bhatt, MD
10:40 – 11:00	MANAGING INFILTRATIVE CARDIOMYOPATHY Robert T. Cole, MD, FHFSa
11:00 – 11:20	NEW TREATMENTS FOR TTR AMYLOIDOSIS Omar Siddiqi, MD
11:20 – 11:40	IS THIS ELEVATED CREATININE AMYLOIDOSIS? Nelson Leung, Mayo
11:40 – 12 PM	AL AMYLOIDOSIS BASICS & UPDATES Jonathan Kaufman, MD
12:00 – 12:10	INTRODUCING THE EMORY AMYLOIDOSIS CLINIC Craig Hofmeister, MD, MPH

Program subject to change

GENERAL INFORMATION

COURSE DESCRIPTION

It has been estimated that approximately 12,000 patients will develop systemic amyloidosis each year in the U.S., but unfortunately many of them will suffer for years prior to definitive diagnosis. There are now comprehensive genetic tests and pyrophosphate cardiac imaging to make the diagnosis earlier and more accurately. Three new drugs for TTR Amyloid that improve cardiac and peripheral nerve were all FDA approved in 2018.

The learner will leave with modern diagnostic algorithms to work-up progressive sensorimotor neuropathy, kidney dysfunction with proteinuria, and restrictive cardiomyopathy. Learners will hear from experts about the new TTR treatments focusing on who will benefit, costs, side effects, and the logistics of these chronic therapies.

TARGET AUDIENCE

This symposium is appropriate for primary care providers, neurologist, cardiologists and hematology/oncology.

LEARNING OBJECTIVES

Upon completion of this education activity, learners should be able to:

- Identify hereditary ATTR symptoms and best treatments;
- Recognize a modern diagnostic algorithm for proteinuria and chronic kidney disease highlighting patients in need of a kidney biopsy;
- Utilize diagnostic algorithm for restrictive cardiomyopathy;
- Discuss AL Amyloidosis and diagnostic algorithms along with modern treatments.

CONTINUING EDUCATION CREDIT

The Emory University School of Medicine designates this live activity for a maximum of 3.25 *AMA PRA Category 1 Credits™*. Physicians should only claim credit commensurate with the extent of their participation in the activity.

Successful completion of this CME activity, which includes participation in the evaluation component, enables the participant to earn up to 3.25 MOC points in the American Board of Internal Medicine's (ABIM) Maintenance of Certification (MOC) program. It is the CME activity provider's responsibility to submit participant completion information to ACCE for the purpose of granting ABIM MOC credit.

The Emory University School of Medicine is accredited by the ACCME to provide continuing medical education for physicians.

SYMPOSIUM LOCATION AND LODGING

The conference will be held at the Emory Conference Center Hotel, 1615 Clifton Road, Atlanta, GA 30329. Complimentary self-parking is available.

REGISTRATION

The registration fee includes course material, continental breakfast, a break and other amenities involved in a rewarding learning experience. Minimum and maximum enrollments have been established. A refund of your registration fee will be made if written cancellation is received no later than April 22, 2019. The liability of Emory University is limited to the registration fee. Emory will not be responsible for any losses incurred by registrants, including but not limited to airfare cancellation or hotel deposits.

REGISTRATION FEE:

Physician - \$75

Physician Assistants/Nurse Practitioners/Nurses - \$50

ADDITIONAL INFORMATION

Please contact Milini Mingo, 404-727-3612; milini.mingo@emory.edu or the Emory CME Office, 404-727-5695 with any questions.

FACULTY

COURSE DIRECTOR

Craig Hofmeister, MD, MPH – Associate Professor, Hematology & Medical Oncology

COURSE CO-DIRECTORS

Kunal Bhatt, MD – Assistant Professor, Division of Cardiology

Jonathan Kaufman, MD – Associate Professor and Associate Vice-Chair for Quality and Safety, Department of Hematology and Medical Oncology

EMORY SCHOOL OF MEDICINE FACULTY

Alton Brad Farris, MD – Associate Professor, Pathology & Laboratory Medicine

David Jaye, MD – Assistant Professor, Department of Pathology & Laboratory Medicine

INVITED GUEST SPEAKERS

Robert T. Cole, MD, FHFSa – Associate Professor, Director of Heart Failure Center, Inova Health

Nelson Leung, MD – Professor of Medicine, Mayo Clinic - Rochester

Elizabeth Mauricio, MD – Electrodiagnostic Physician Neurologist, Mayo Clinic - Jacksonville

Omar Siddiqi, MD – Assistant Professor, School of Medicine, Boston University

Mark Sloan, MD – Associate Professor, School of Medicine, Boston Medical Center

